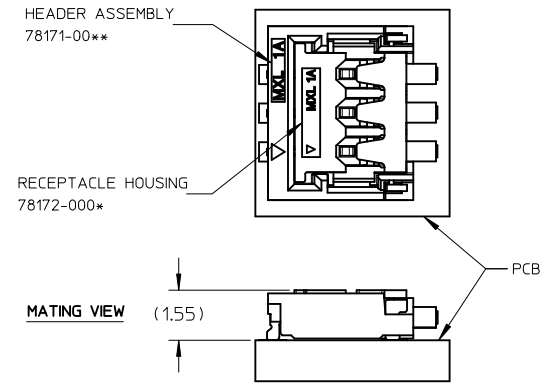


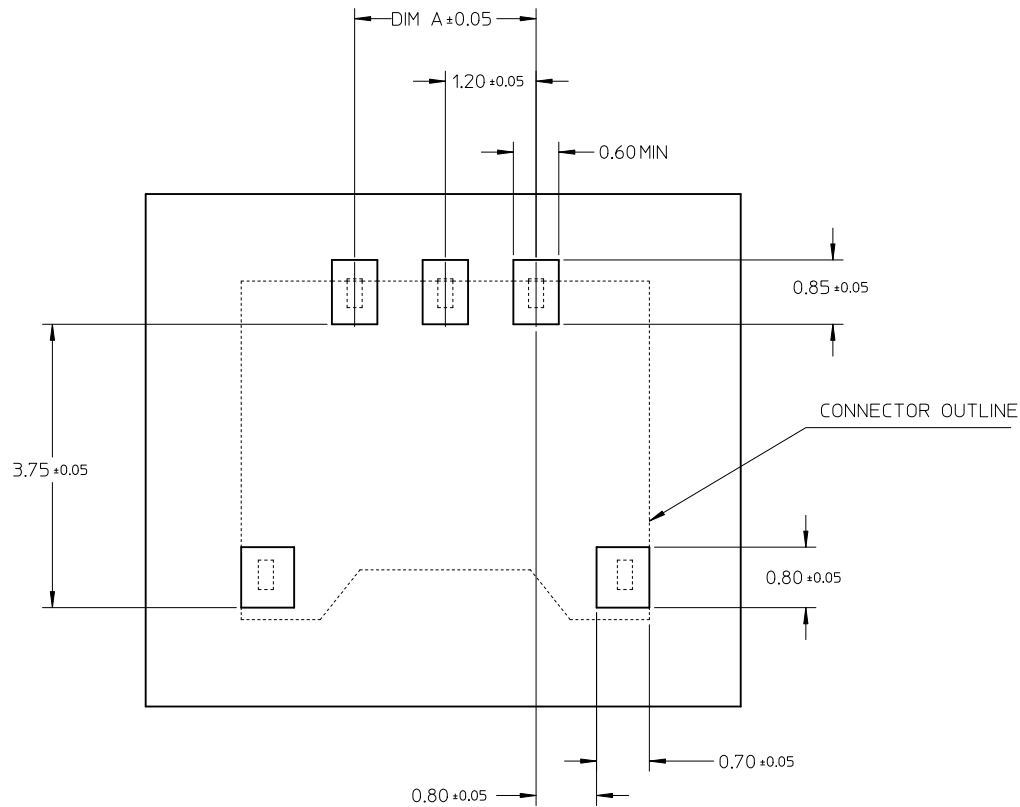
CKT SIZE	PART NUMBER	DIM A	DIM B	DIM C	DIM K	ANTI-WICKING
2	$\triangle/8$ 78171-0002	1.2	2.6	4.2	1.5	YES
3	$\triangle/8$ 78171-0003	2.4	3.8	5.4	2.7	YES
4	$\triangle/8$ 78171-0004	3.6	5.0	6.6	3.9	YES
5	$\triangle/8$ 78171-0005	4.8	6.2	7.8	5.1	YES

NOTES:

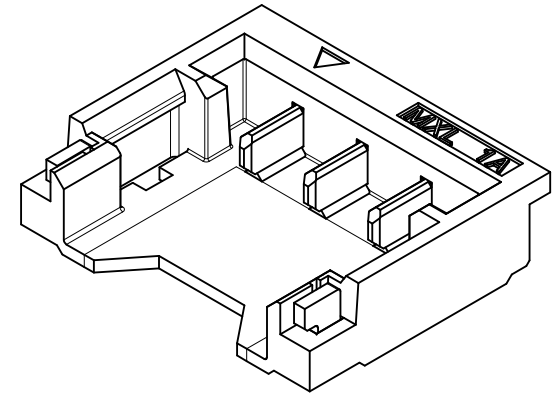
- MATERIALS:  
HOUSING: LCP, UL94V-0, COLOUR : BLACK  
TERMINAL: COPPER ALLOY  
FITTING NAIL: COPPER ALLOY
- FINISHES:  
TERMINAL : GOLD 0.14µm MIN. WITH 1.0 UM MIN NICKEL UNDERPLATE OVERALL  
FITTING NAIL : 1.5 UM MIN TIN WITH 1.0UM MIN NICKEL UNDERPLATE OVERALL.
- PRODUCT SPECIFICATION: PS-78171-010
- PACKAGING SPECIFICATION: TAPE & REEL PACKAGING
- MATES WITH MOLEX PART NUMBER 78172-00\*\*
- 3 CIRCUITS IS SHOWN FOR ILLUSTRATION PURPOSE ONLY
- SOLDERTAIL AND FITTING NAIL COPLANARITY : 0.10 MM MAX TO BE MEASURED BY PLACING THE CONNECTOR ON A FLAT GAUGED SURFACE.
- $\triangle/8$  APPLY FLUX ANTI-WICKING SOLUTION ON HOUSING BEFORE TERMINAL ASSEMBLY.



REVISED EC NO: J2011-0155 DRWN: CULAM CHKD: APPR: NUKITA 2010/07/30 2010/10/25	QUALITY SYMBOLS $\blacktriangledown=0$ $\triangle/8=0$	GENERAL TOLERANCES (UNLESS SPECIFIED)		DIMENSION STYLE MM ONLY		SCALE NTS	DESIGN UNITS METRIC	THIRD ANGLE PROJECTION			
		4 PLACES $\pm$ --- $\pm$ --- 3 PLACES $\pm$ --- $\pm$ --- 2 PLACES $\pm$ 0.2 $\pm$ --- 1 PLACE $\pm$ 0.3 $\pm$ ---	mm INCH	DRAWN BY CULAM	DATE 2007/10/25	TITLE 1.20MM PITCH, W-T-B 1.40MM HEIGHT PLUG CONNECTOR					
		ANGULAR $\pm$ 3 °		CHECKED BY KSSHANTHA	DATE 2007/12/07	MOLEX INCORPORATED					
		DRAFT WHERE APPLICABLE MUST REMAIN WITHIN DIMENSIONS		APPROVED BY NUKITA	DATE 2010/10/25	MATERIAL NO. SEE TABLE	DOCUMENT NO. SD-78171-008	SHEET NO. 1 OF 3			

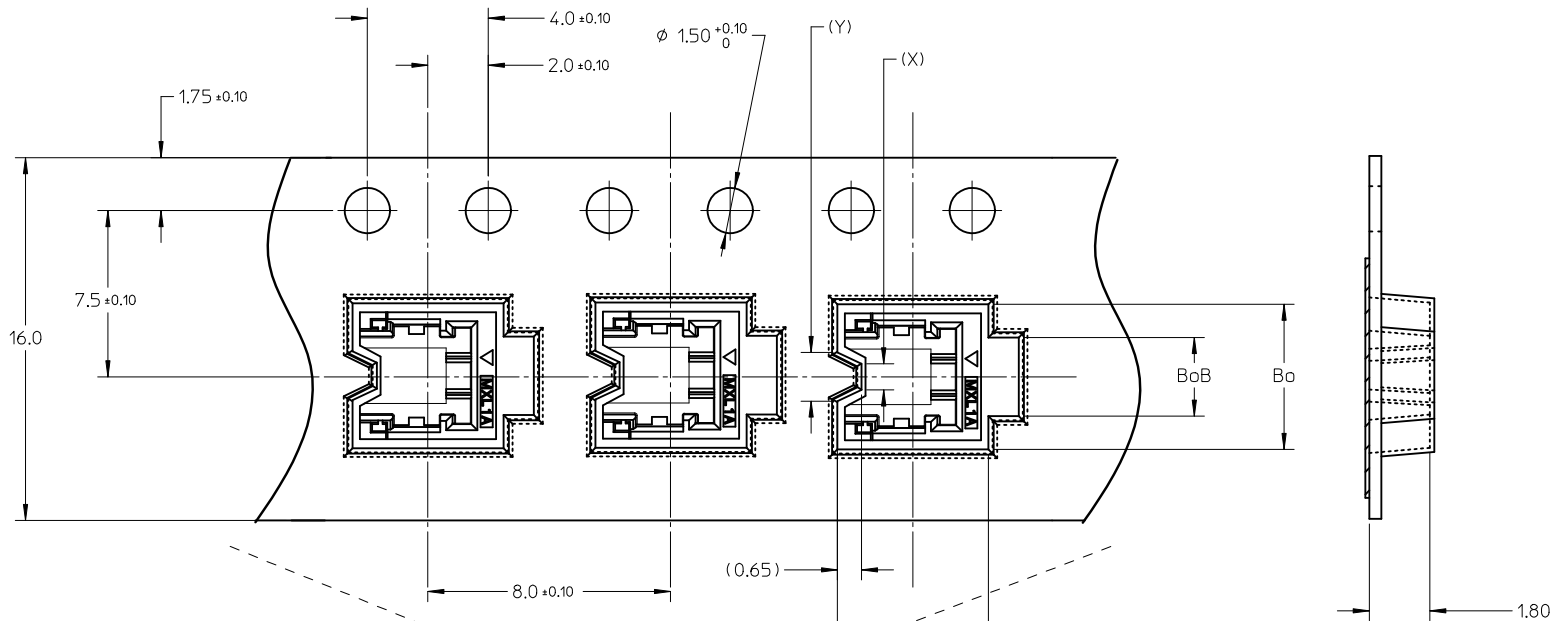


RECOMMENDED PCB LAYOUT



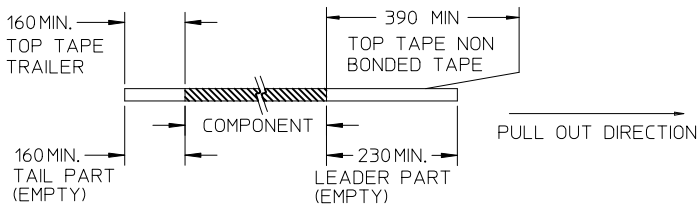
REVISED EC NO: J2011-0155 DRWN: CWLAM CHKD: APPR: NUKITA	2010/07/30 2010/10/25	DESCRIPTION NUKITA	QUALITY SYMBOLS	GENERAL TOLERANCES (UNLESS SPECIFIED)	DIMENSION STYLE	SCALE	DESIGN UNITS	THIRD ANGLE PROJECTION		
			$\nabla = 0$ $\square = 0$	mm    INCH 4 PLACES ± --- ± --- 3 PLACES ± --- ± --- 2 PLACES ± 0.2 ± --- 1 PLACE ± 0.3 ± --- ANGULAR ± 3 °	MM ONLY	NTS	METRIC	DRAWN BY: CWLAM    DATE: 2007/10/25 CHECKED BY: KSSHANTHA    DATE: 2007/12/07 APPROVED BY: NUKITA    DATE: 2010/10/25	TITLE	1.20MM PITCH, W-T-B 1.40MM HEIGHT PLUG CONNECTOR
			DRAFT WHERE APPLICABLE MUST REMAIN WITHIN DIMENSIONS	SEE TABLE	MOLEX INCORPORATED DOCUMENT NO. SD-78171-008	SHEET NO.	2 OF 3			
			THIS DRAWING CONTAINS INFORMATION THAT IS PROPRIETARY TO MOLEX INCORPORATED AND SHOULD NOT BE USED WITHOUT WRITTEN PERMISSION							

10 9 8 7 6 5 4 3 2 1

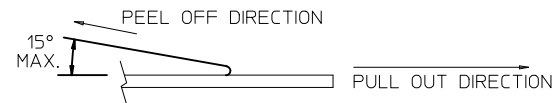


NOTES:

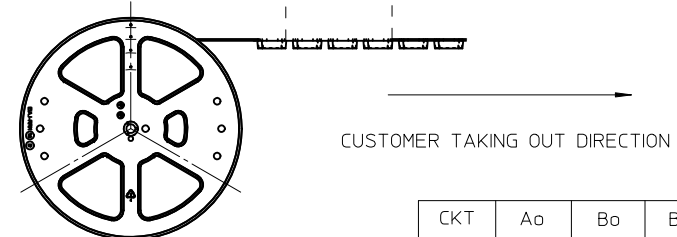
1. LEADER AND TRAILER TAPE



2. PEELING OFF FORCE OF THE TOP TAPE: 20 - 80gf. (PEELING DIRECTION AS SHOWN IN FOLLOWING FIGURE)



- 3. TAPE AND REEL SPECIFICATION IS AS PER EIA-481.
- 4. TAPE AND REEL QUANTITY : 4500 PCS/ REEL.
- 5. MATERIAL : CARRIER TAPE : PP CLEAR  
REEL / FLANGE : PS, COLOUR : BLACK
- 6. Ao & Bo ARE MEASURED ON A PLANE 0.3MM ABOVE THE BOTTOM OF THE POCKET.



CKT	Ao	Bo	BoB	(X)	(Y)	EMBOSS P/N	TOP TAPE P/N	REEL P/N
2	5.0	4.7	2.6	0.74	1.54	89990-2525	59499 -0102	89990-6802
3	5.0	5.9	3.8	1.94	2.74	89990-2526		
4	5.0	7.1	5.0	3.14	3.94	89990-2527		
5	5.0	8.3	6.2	4.34	5.14	89990-2529		

REVISED EC NO: J2011-0155 DRWN: CWLAM CHKD: APPR: NUKITA	2010/07/30 2010/10/25	DESCRIPTION REV	QUALITY SYMBOLS	GENERAL TOLERANCES (UNLESS SPECIFIED)	DIMENSION STYLE	SCALE	DESIGN UNITS	THIRD ANGLE PROJECTION
			▼=0 ◻=0	mm INCH 4 PLACES ± --- ± --- 3 PLACES ± --- ± --- 2 PLACES ± 0.2 ± --- 1 PLACE ± 0.3 ± --- ANGULAR ± 3 °	MM ONLY	NTS	METRIC	
					DRAWN BY: CWLAM CHECKED BY: KSSHANTHA APPROVED BY: NUKITA	DATE: 2007/10/25 DATE: 2007/12/07 DATE: 2010/10/25	TITLE: 1.20MM PITCH, W-T-B 1.40MM HEIGHT PLUG CONNECTOR	
					MATERIAL NO. SEE TABLE	DOCUMENT NO. SD-78171-008	MOLEX INCORPORATED	

9 8 7 6 5 4 3 2 1